

**LEGEND:**

- SITE BOUNDARY
- 500m ASSESSMENT AREA
- POND (ACTIVE)
- POND (INACTIVE)
- MODIFIED WATERCOURSE
- MANGROVE
- REEDBED
- ARDEID NIGHT ROOST
- INDICATIVE LOCATION OF MAJOR TREE GROUPS OF NAM SANG WAI CORMORANT ROOST

**AECOM**

**PROJECT**  
 項目  
**YUEN LONG EFFLUENT POLISHING PLANT - INVESTIGATION, DESIGN AND CONSTRUCTION**

**CLIENT**  
 業主  
 渠務署  
 Drainage Services Department

**CONSULTANT**  
 顧問公司  
 AECOM Asia Company Ltd.  
 www.aecom.com

**SUB-CONSULTANTS**  
 分判工程師/顧問公司

**ISSUE/REVISION**  
 修訂

NO.	DATE	DESCRIPTION	CHK.

**STATUS**  
 階段

**SCALE**  
 比例  
 A1 1:3000

**DIMENSION UNIT**  
 尺寸單位  
 METRES

**KEY PLAN**  
 索引圖

Wetland Habitats	ID	Area Description	Abundance <sup>(1)</sup>		Diversity <sup>(2)</sup>	
			Dry	Wet	Dry	Wet
Modified Watercourse	MW1	Confluence of Shan Pui River and Kam Tin River	VH	L - M	VH	L - M
	MW2	Shan Pui River adjacent to Project site	L - M	VL - L	H	L
	MW3	Upper course of Shan Pui River along YLIE	L - M	VL - L	H	L
Ponds	P1	Active Ponds adjacent to Project site in Fung Lok Wai	L	VL	L	VL - L
	P2	Active Ponds North to Nullah 2 in Fung Lok Wai	M - H	L - M	M-H	M
	P3	Inactive Ponds in Fung Lok Wai	L	VL	VL-L	VL - L
	P4	Active and Inactive Ponds in Nam Sang Wai	L - M	VL	L	VL - L
Mangrove	MG	Mangrove within Assessment Area	VL	VL - L	VL	VL
Reedbed	RB	Reedbed in Nam Sang Wai	VL	VL	VL	VL

Note:

(1) Relative abundance of avifauna species of conservation importance amongst wetland habitats within the assessment area:  
 VL = Very Low (<50 individuals); L = Low (~100 individuals); M = Moderate (~300 individuals); H = High (~500 individuals); VH = Very High (>700 individuals)

(2) Relative diversity of avifauna species of conservation importance amongst wetland habitats within the assessment area:  
 VL = Very Low (<5 species); L = Low (~10 species); M = Moderate (~15 species); H = High (~20 species); VH = Very High (>25 species)

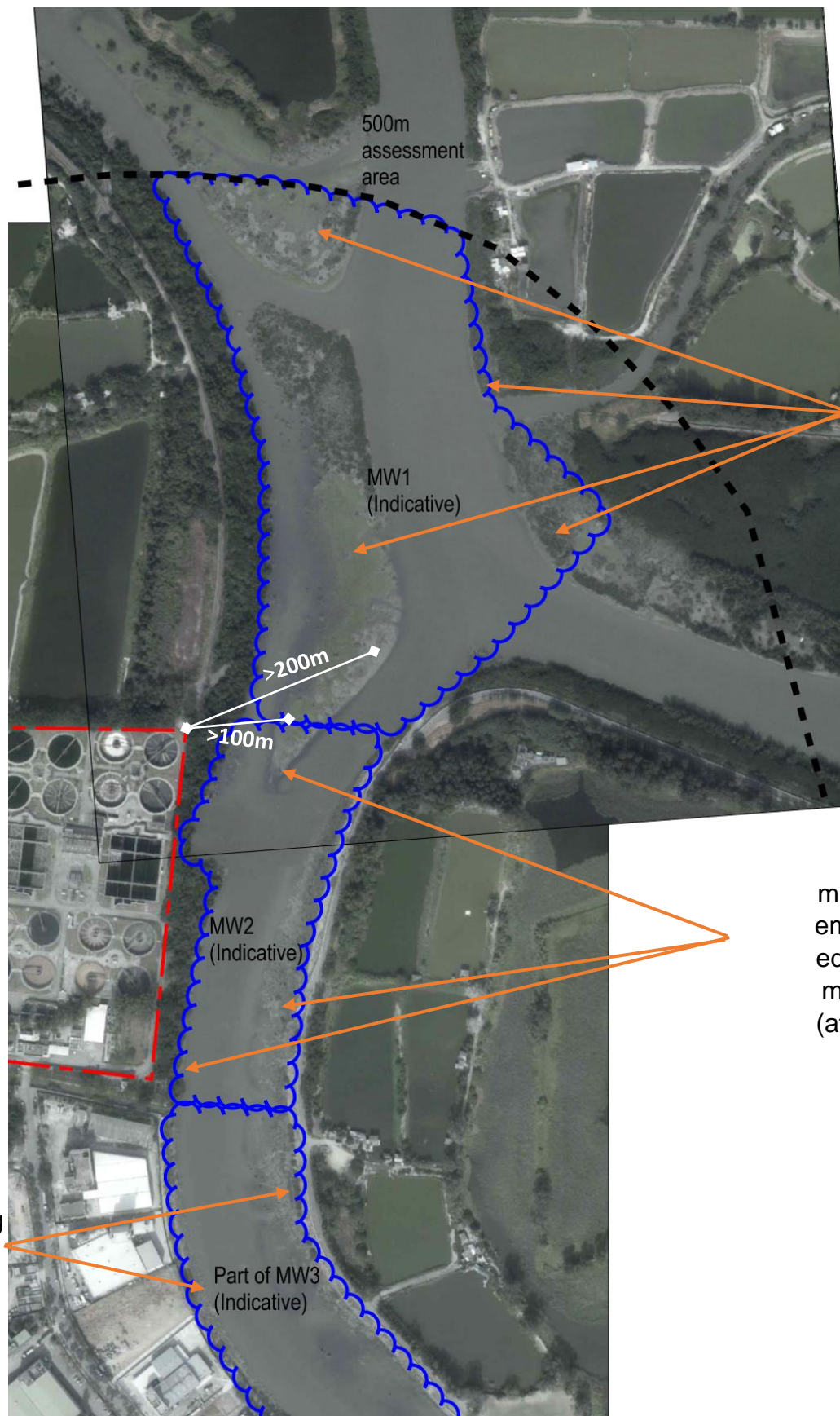
**PROJECT NO.**  
 項目編號  
 60505476

**CONTRACT NO.**  
 合約編號  
 CE 3/2015 (DS)

**SHEET TITLE**  
 圖則名稱  
**USAGE OF WETLAND HABITATS WITHIN ASSESSMENT AREA BY AVIFAUNA OF SPECIES OF CONSERVATION IMPORTANCE**

**SHEET NUMBER**  
 圖則編號  
 60505476/EIA/APPENDIX 8.5

This drawing has been prepared for the use of AECOM's client. It may not be used, modified, reproduced or relied upon by third parties, except as agreed by AECOM in writing. AECOM accepts no responsibility, and disclaims any liability whatsoever, to any party, for losses or claims on this drawing without AECOM's express written consent. Do not scale this document. All measurements must be obtained from the stated dimensions.



Extensive mudflats at central island and along embankment at MW1

Strips of mudflats along embankment & edge of central mudflat island (at confluence) at MW2

Strips of mudflats along at MW3

Plate1

Indicative Locations of Wetland Habitats surrounding Project site during low tide

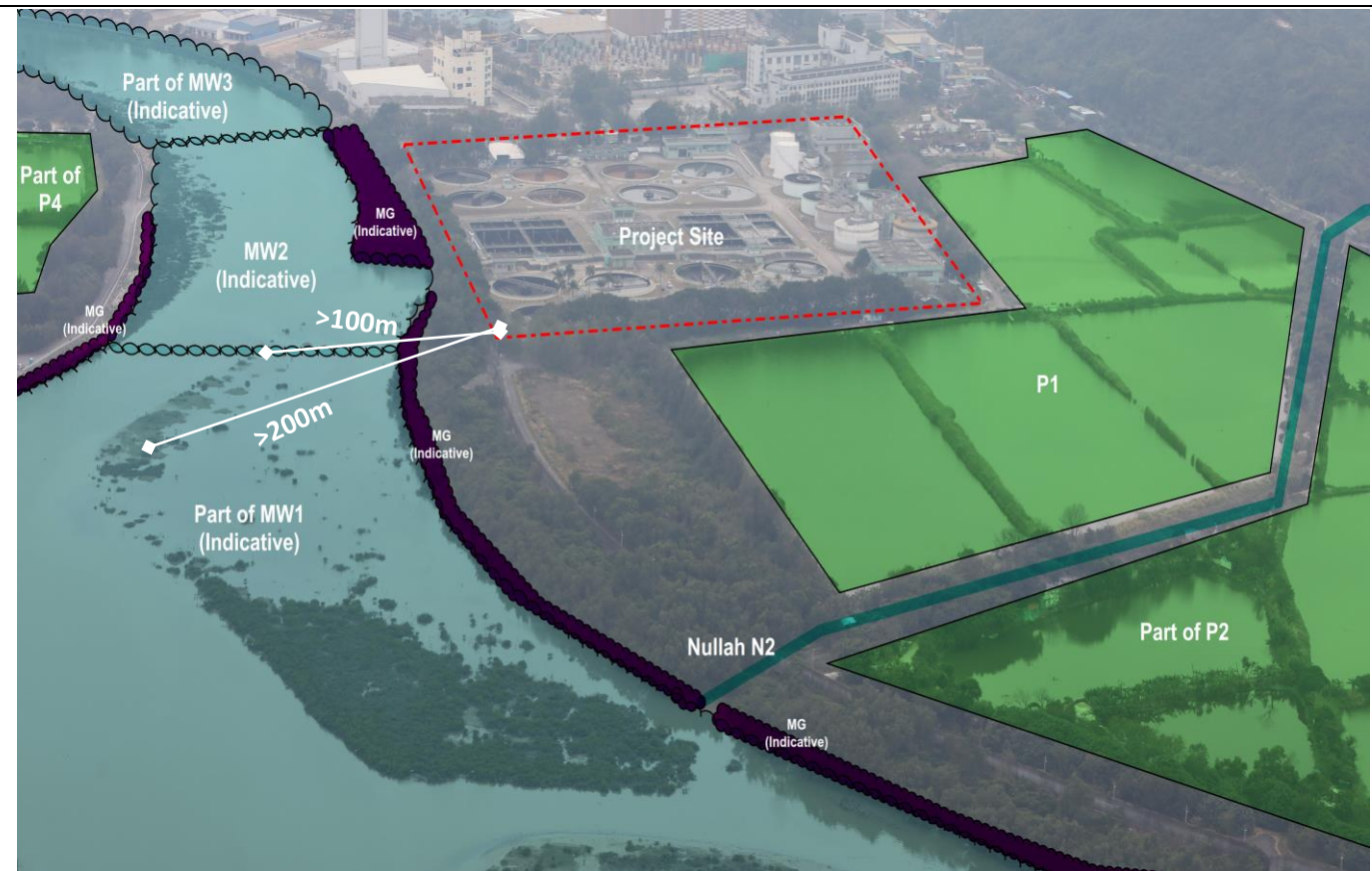


Plate 2

Indicative Locations of Wetland Habitats surrounding Project site during high tide

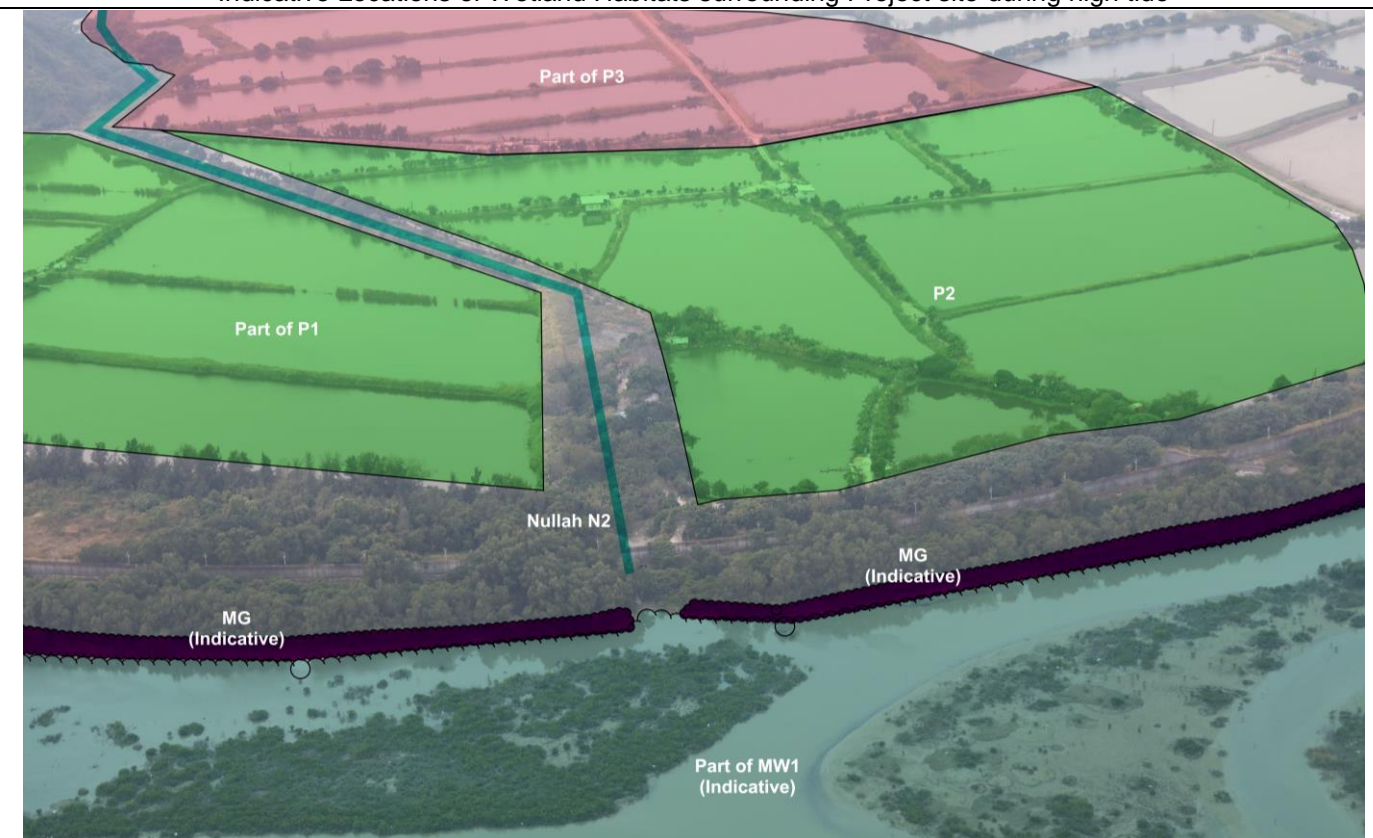


Plate 3

Extensive mudflats at central island and along embankment at MW1 during high tide at MW1

渠務署  
Drainage Services Department

**AECOM**

Agreement No. CE 3/2015 (DS)  
Yuen Long Effluent Polishing Plant – Investigation, Design and Construction

**Representative Photographs of Wetland Habitats Recorded within the Assessment Area**

SCALE

N.T.S.

DATE

Dec-18

CHECK

LAMCCG

DRAWN

LAMTYA

JOB NO.

60505476

Appendix No.

8.5

Rev

-



Plate 4  
Extensive mudflats at central island at MW1, with its edge in MW2 (low tide)



Plate 5  
Extensive mudflats at central island and along embankment at MW1 during low tide



Plate 6  
Extensive mudflats at central island at MW1

 渠務署  
Drainage Services Department

**AECOM**

Agreement No. CE 3/2015 (DS)  
Yuen Long Effluent Polishing Plant – Investigation, Design and Construction

**Representative Photographs of Wetland Habitats Recorded within the Assessment Area**

SCALE

N.T.S.

DATE

Dec-18

CHECK

LAMCCG

DRAWN

LAMTYA

JOB NO.

60505476

Appendix No.

8.5

Rev

-



Plate 7  
Mudflats along embankment at MW2 and MW3 during low tide



Plate 8  
Strips of mudflats at Shan Pui River and mangroves adjacent to Project site during low tide (MW2 & MG)



Plate 9  
Mudflats along embankment in MW3 during low tide

 渠務署  
Drainage Services Department

**AECOM**

Agreement No. CE 3/2015 (DS)  
Yuen Long Effluent Polishing Plant – Investigation, Design and Construction

**Representative Photographs of Wetland Habitats Recorded within the Assessment Area**

SCALE

N.T.S.

DATE

Dec-18

CHECK

LAMCCG

DRAWN

LAMTYA

JOB NO.

60505476

Appendix No.

8.5

Rev

-